

Al-Y (Aluminum-Yttrium)

H. Okamoto

The Al-Y phase diagram in [Massalski2] was redrawn from [1989Gsc].

This system was reassessed thermodynamically by [2006Liu1] based on more recent experimental phase boundary data, including those obtained by the same group of authors [2006Liu2]. Figure 1 shows the Al-Y phase diagram calculated by [2006Liu1].

References

- 1989Gsc:** K.A. Gschneidner, Jr. and F.W. Calderwood, The Al-Y (Aluminum-Yttrium) System, *Bull. Alloy Phase Diagrams*, 1989, **10**(1), p 44-47
- 2006Liu1:** S. Liu, Y. Du, and H. Chen, A Thermodynamic Reassessment of the Al-Y System, *Calphad*, 2006, **30**, p 334-340
- 2006Liu2:** S. Liu, Y. Du, H. Xu, C. He, and J.C. Schuster, Experimental Investigation of the Al-Y Phase Diagram, *J. Alloys Compds.*, 2006, **414**, p 60-65

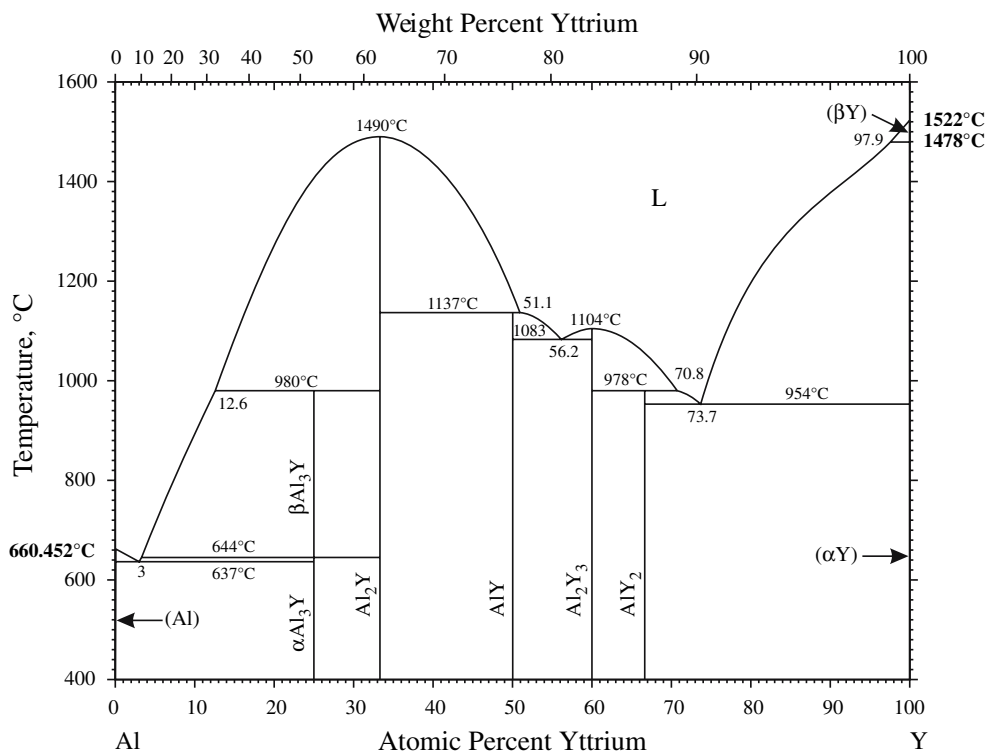


Fig. 1 Al-Y phase diagram